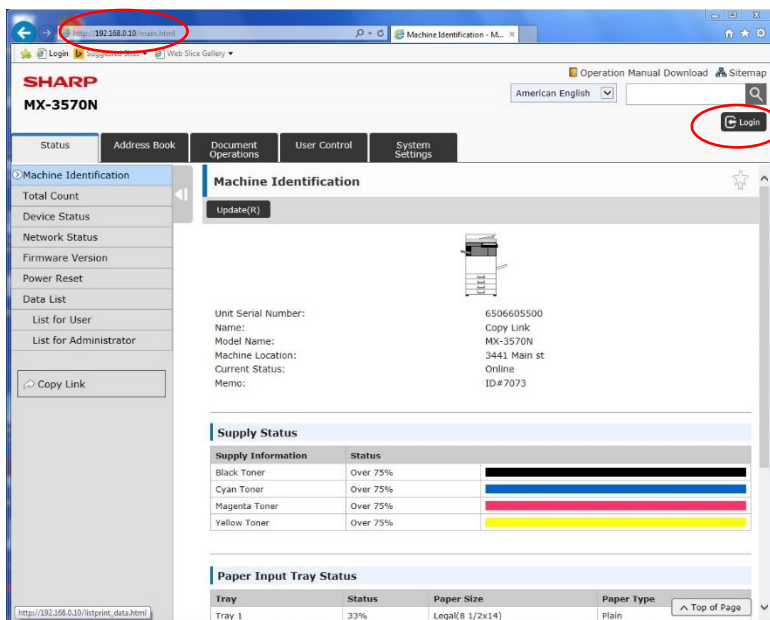
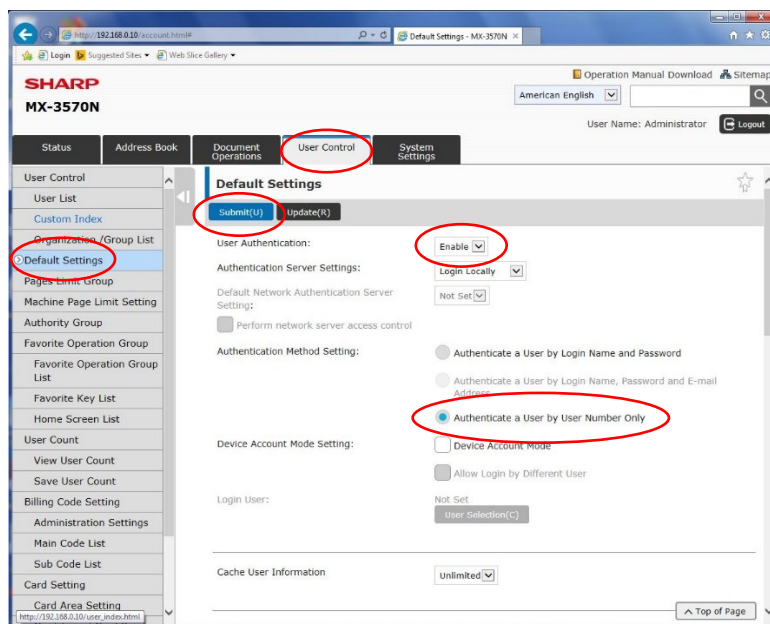


## Adding User Account Codes on a Sharp Multi Function Printer



Log in to Device Webpage by typing the Printers IP address into your browser.

Login as an administrator. (PW: admin)



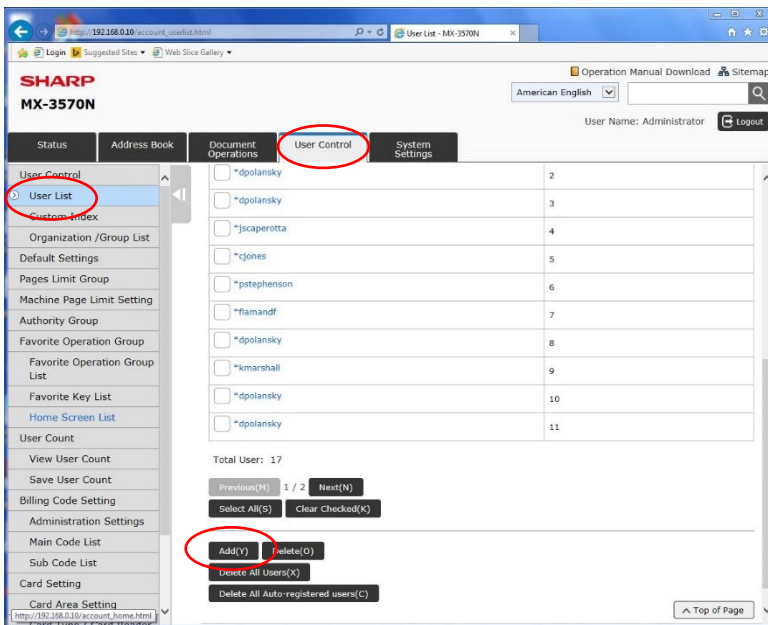
Select **User Control** in the menu on the top

Select **Default Settings** in the submenu

For **User Authentication** choose **Enable**

For **Authentication Method** choose **Authenticate a User by User Number Only**

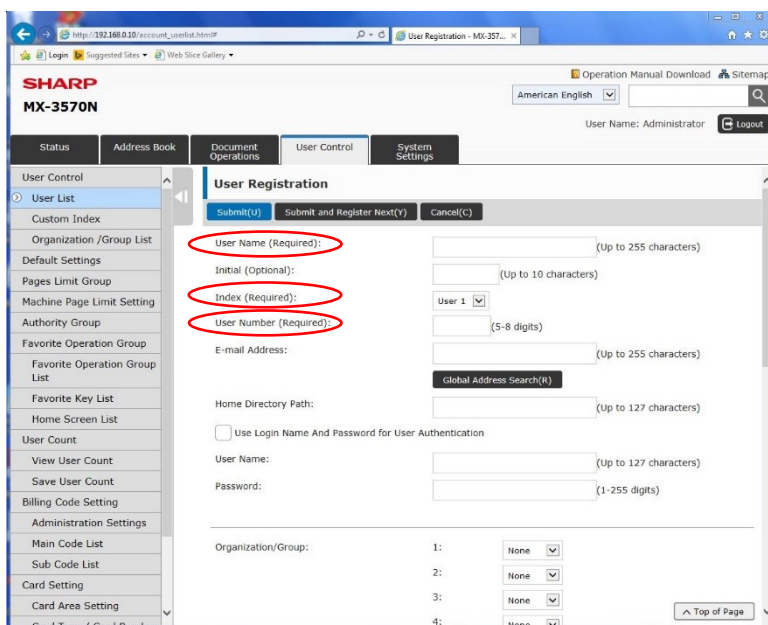
Choose **Submit**



Select **User Control** in the menu on the top

Select **User List** in the submenu

Select **Add**



Enter the New User Information and select **Submit**

Note:

Required fields are:

User Name

Index (User's Group)

User Number

Choose **Submit**

**The MFP will now require a login on the front panel**