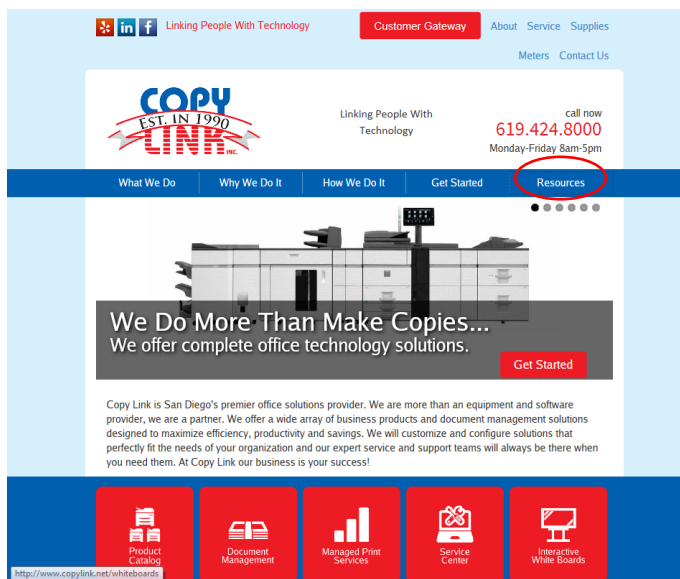
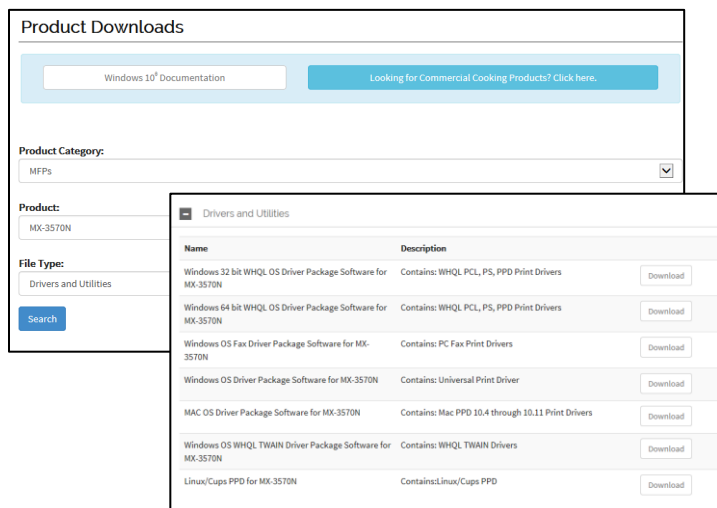


Installing Print Drivers for a Sharp Multi-Function Printer (Windows)



Print Drivers can be downloaded through the Copy Link website.

1. Go to www.copylink.net and select **Driver Downloads**, under the **Resources** menu.
2. Select Sharp Drivers.

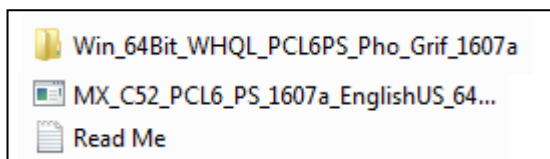


3. In the Drop Down menus, Choose the:
 - “Product Categories” (MFP)
 - “Product” (Your Printer Model)
 - “File Type” (Drivers and Utilities)

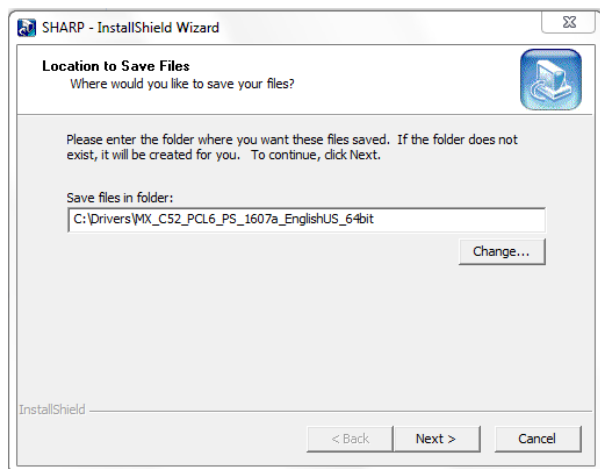
Select **Search**

4. Choose the Driver based on your computers Operating System.

Select **Download**

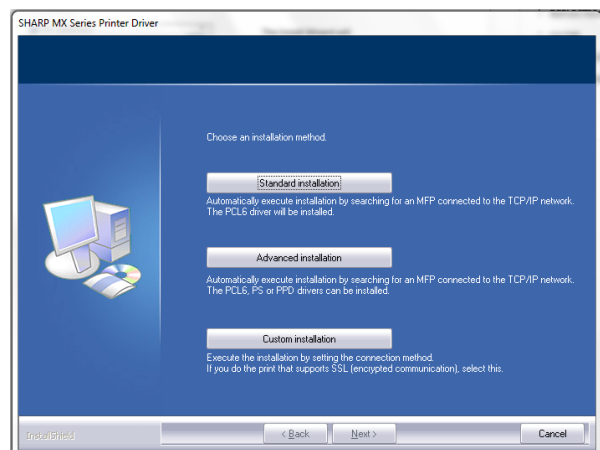


5. Open the downloaded folder and **Run** the application.
(Use PCL6 if there is an option)

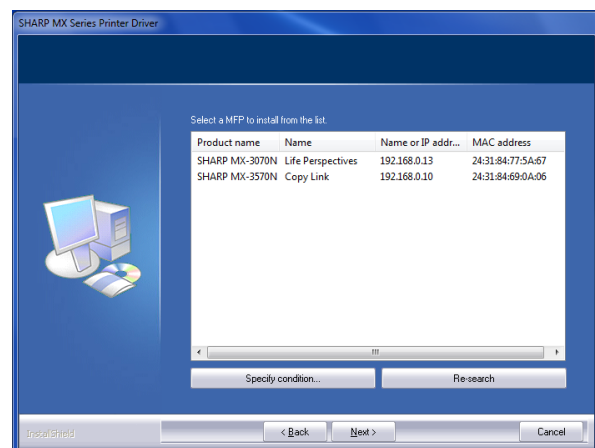


The Install Wizard will launch and guide you through the process.

“Save Files” to the default location and select “Next”



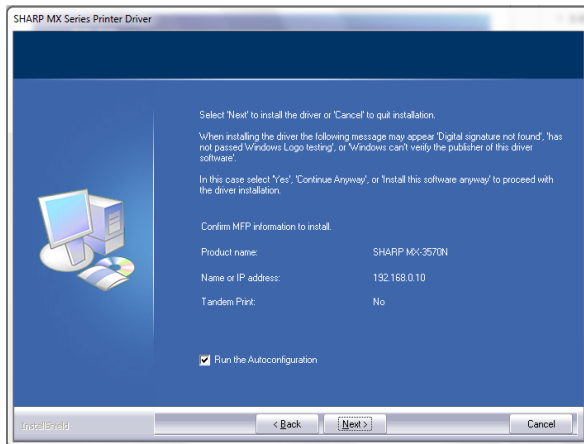
Select “Standard Installation”



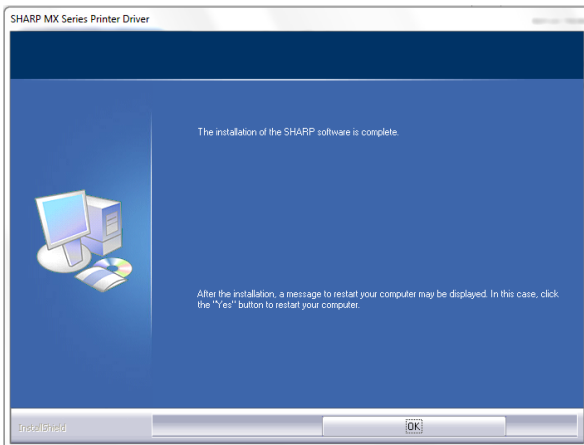
The Program will search for the Device on your network. Please choose the target Printer.

Note: If the Printer is not detected, choose “Specify Condition” and enter the Printer IP Address manually.

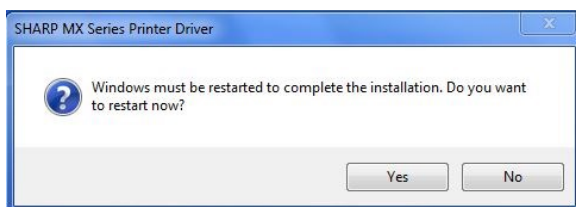
Click “Next”



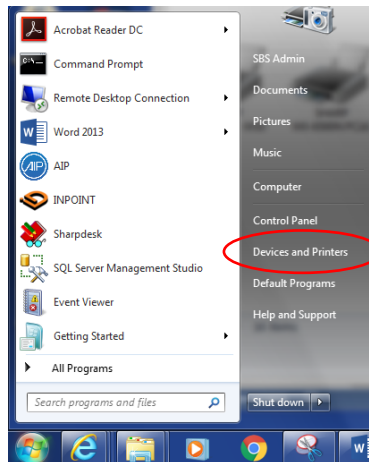
Confirm the MFP information and select “Next” to install the Driver. Select the “Run the Auto Configuration” option.



The installation of the Driver Software is now complete.

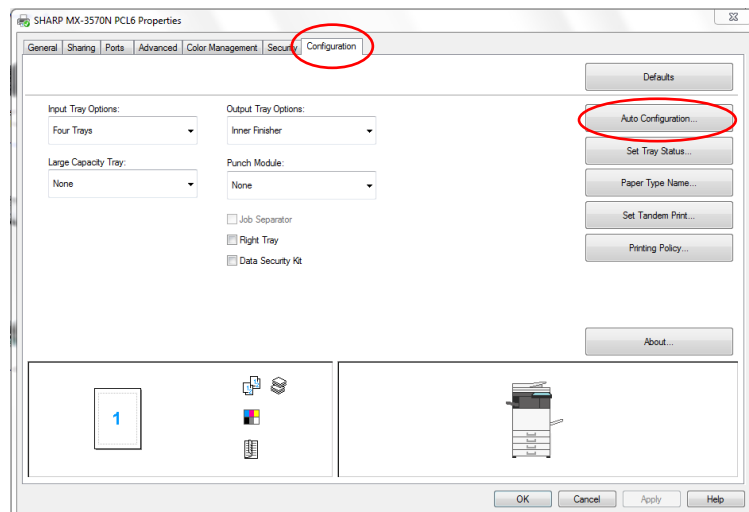
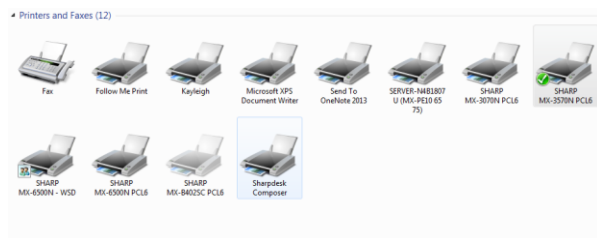


Please restart your computer.



Open “Devices and Printers” from your Windows Start Menu.

Right Click on the new Print Driver and select “Printer Properties”



Select the “Configuration” tab in the top menu. Select the “Auto Configuration” button to the right. This will configure the options and accessories installed on your Printer.

Your Printer is now ready for use.